

1 MTS 80-40 R36 DQ



Screw spindle pump designed for pumping of cooling lubricants and cutting oils water/oil emulsion min. 3% for machine tool applications. The pump is designed to be mounted on top of tanks with pump immersed in the pumped liquid.

The pump has the following characteristics:

- High efficiency ensures very low heat input into the cooling lubricant.
- Axial thrust completely neutralised hydrostatically.
- Very wear resistant due specially hardened surfaces.
- DQ - shaft seal ring.
- Power transmission via cast iron flexible coupling.

The motor is a 3-phase AC motor.

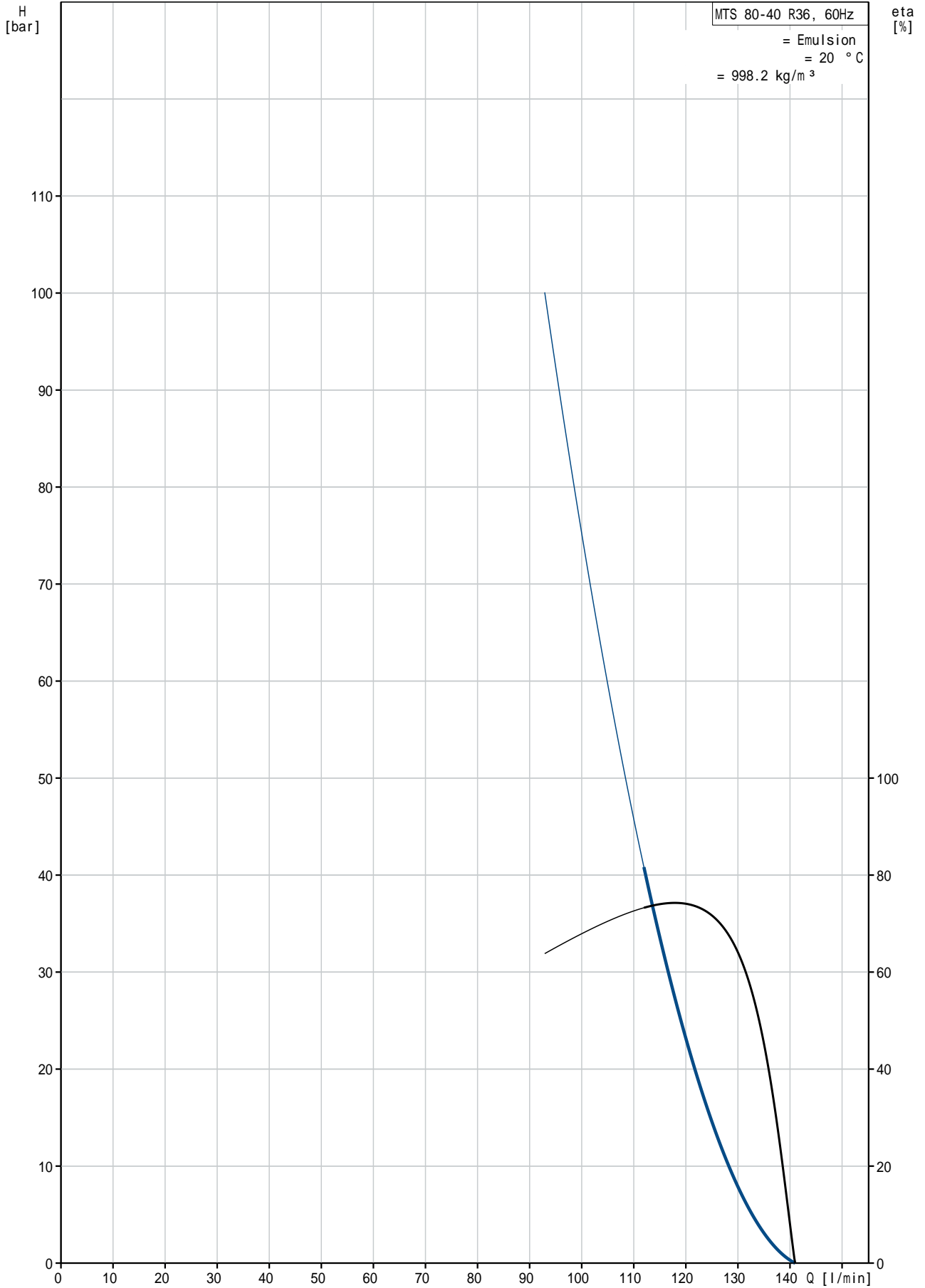
:	:	Emulsion
:	:	80 °C
:	:	20 °C
:	:	998.2 kg/m ³
:	:	
:	가	: 3500 rpm
:	:	112 l/min
1	:	DQ
가:	:	CE,EAC
:	:	
:	:	60 °C
:	:	40 bar
:	:	G2"
:	:	G 1 1/4" / SAE 1 1/2"
:	:	335 mm
:	:	FF300
:	:	
IE	:	160MB
	:	IE2 - IE3
	- P2:	11 kW
	(P2):	10.2 kW
	:	60 Hz
	:	3 x 220-277D/380-480Y V
	:	36,0-30,0/20,8-17,2 A
	:	580-890 %
cos phi -	:	0.89-0.83
	:	3520-3550 rpm
	:	IE2 90,2% - IE3 91,0%
	:	90.2-91.0 %
3/4	:	91.8 %
1/2	:	91.3 %
	:	2
	(IEC 34-5):	55 Dust/Jetting

(IEC 85): F

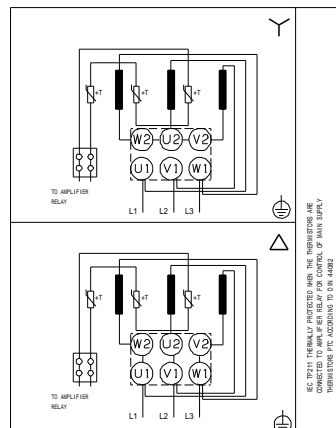
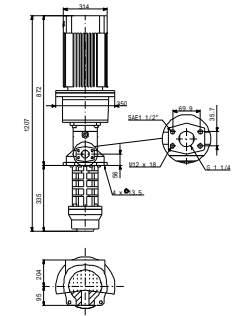
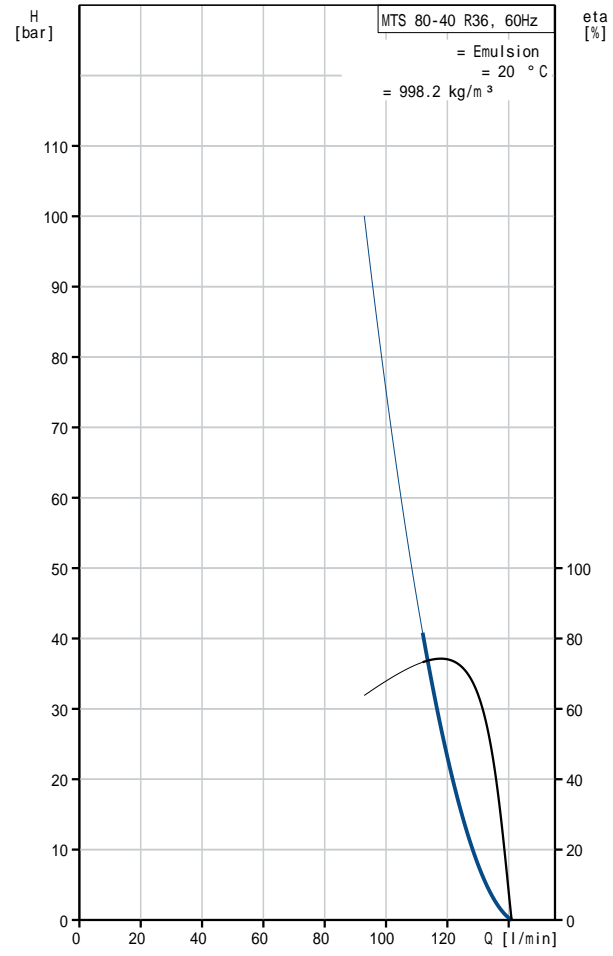
:

: 142 kg

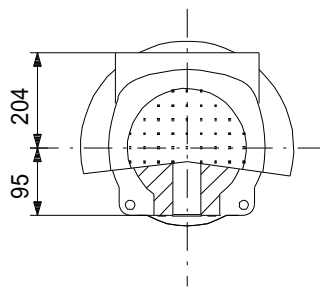
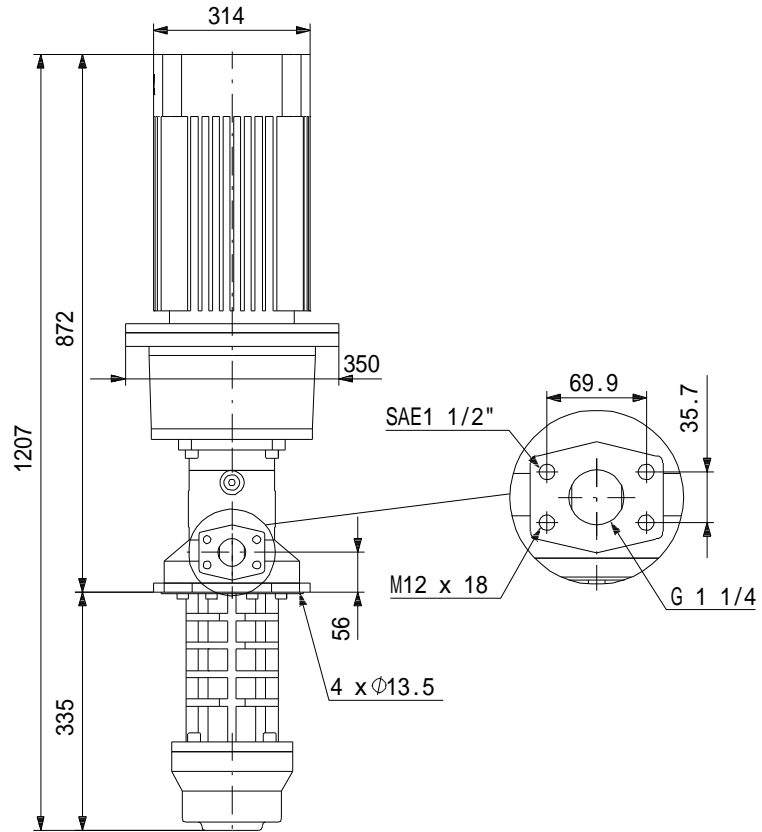
MTS 80-40 R36 DQ 60 Hz



MTS 80-40 R36 DQ	
EAN	
가	3500 rpm
	112 l/min
1	DQ
가:	CE, EAC
	A
	60 °C
	40 bar
	G2"
	G 1 1/4" / SAE 1 1/2"
	335 mm
	FF300
	Emulsion
	80 °C
	20 °C
	998.2 kg/m ³
	160MB
IE	IE2 - IE3
- P2:	11 kW
(P2):	10.2 kW
	60 Hz
	3 x 220-277D/380-480Y V
	36,0-30,0/20,8-17,2 A
	580-890 %
cos phi -	0.89-0.83
	3520-3550 rpm
	IE2 90,2% - IE3 91,0%
	90.2-91.0 %
3/4	91.8 %
1/2	91.3 %
	2
(IEC 34-5):	55 Dust/Jetting
(IEC 85):	F
	PTC
	87420001
Pos term	12 o'clock
	142 kg
	3 %
	36



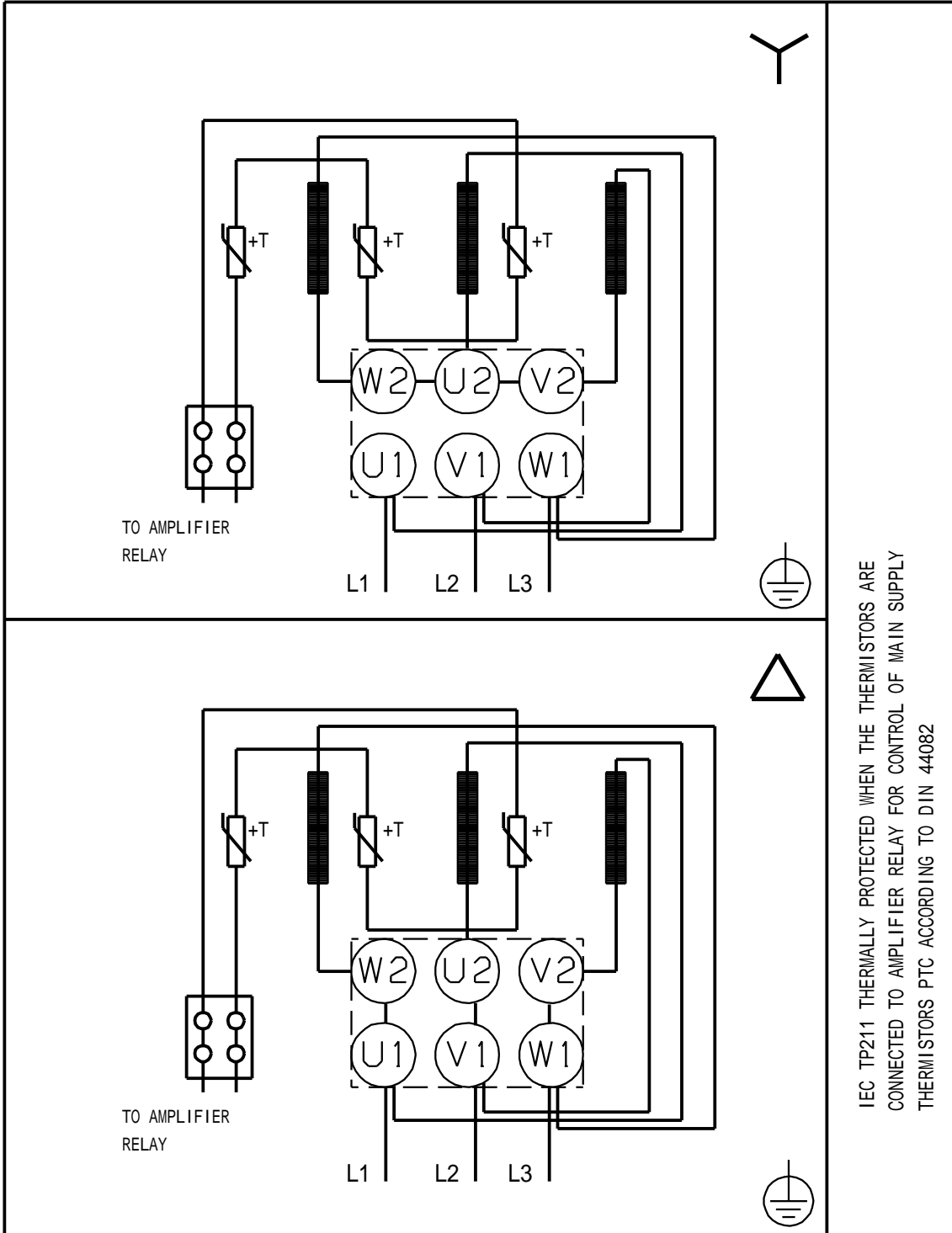
MTS 80-40 R36 DQ 60 Hz



!

[mm]

MTS 80-40 R36 DQ 60 Hz



IEC TP211 THERMALLY PROTECTED WHEN THE THERMISTORS ARE
CONNECTED TO AMPLIFIER RELAY FOR CONTROL OF MAIN SUPPLY
THERMISTORS PTC ACCORDING TO DIN 44082