

1 MTS 80-80 R36 DQ



Screw spindle pump designed for pumping of cooling lubricants and cutting oils water/oil emulsion min. 3% for machine tool applications. The pump is designed to be mounted on top of tanks with pump immersed in the pumped liquid.

The pump has the following characteristics:

- High efficiency ensures very low heat input into the cooling lubricant.
- Axial thrust completely neutralised hydrostatically.
- Very wear resistant due specially hardened surfaces.
- DQ - shaft seal ring.
- Power transmission via cast iron flexible coupling.

The motor is a 3-phase AC motor.

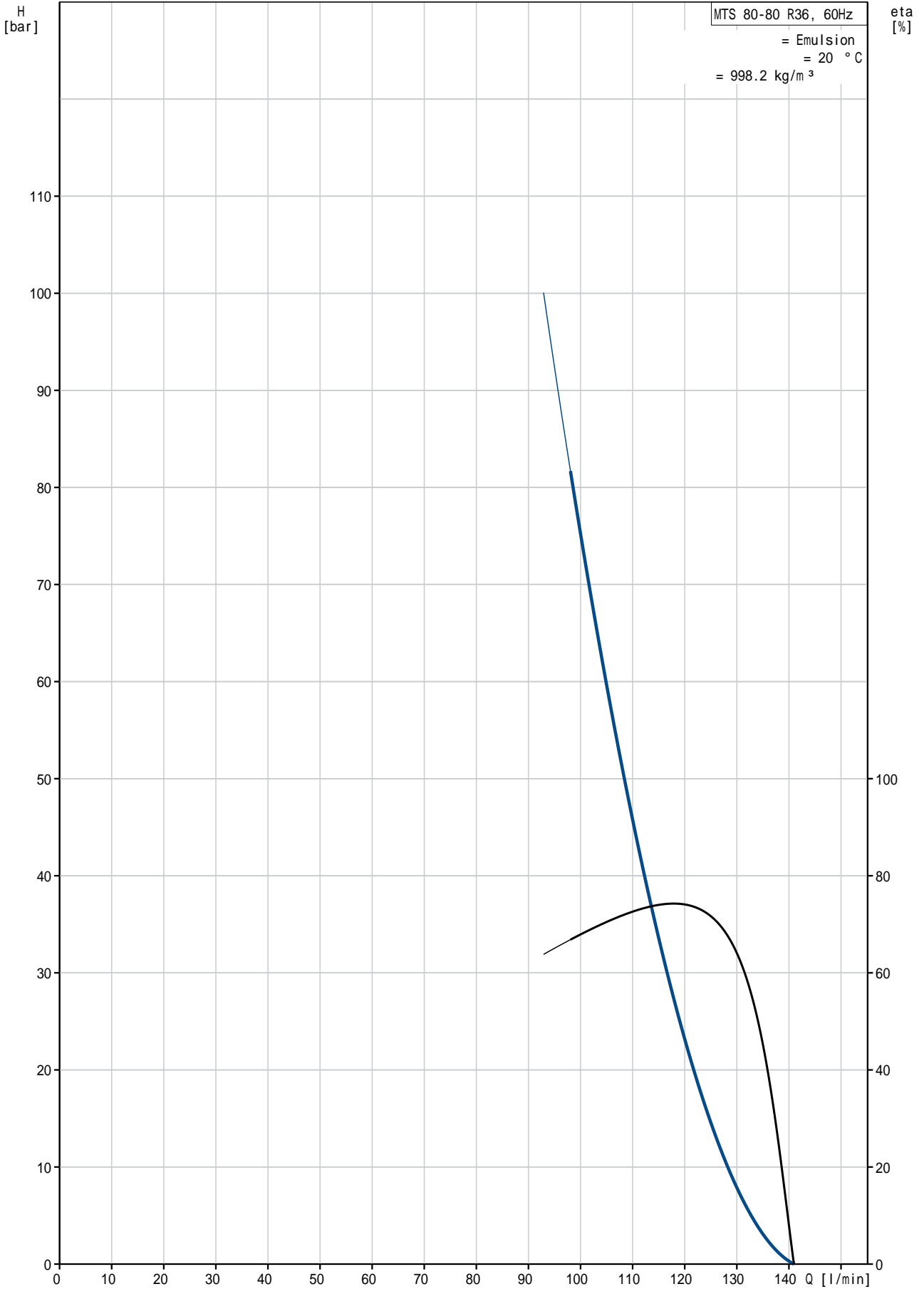
:	:	Emulsion
:	:	80 °C
:	:	20 °C
:	:	998.2 kg/m <sup>3</sup>
:	:	
:	가	: 3500 rpm
:	:	98.6 l/min
1	:	DQ
가:	:	CE,EAC
:	:	
:	:	60 °C
:	:	80 bar
:	:	G2"
:	:	G 1 1/4" / SAE 1 1/2"
:	:	335 mm
:	:	FF300
:	:	
IE	:	180MB
	:	NEMA Premium / IE3 60Hz
	- P2:	22 kW
	(P2):	19.6 kW
	:	60 Hz
	:	3 x 380-480D/660-690Y V
	:	40,0-32,5/23,0-22,2 A
	:	650-1040 %
cos phi	- :	0.91-0.91
	:	3520-3560 rpm
	:	IE3 91,7%
	:	91.7 %
3/4	:	93.7 %
1/2	:	94.4 %
	:	2
	(IEC 34-5):	55 Dust/Jetting

(IEC 85): F

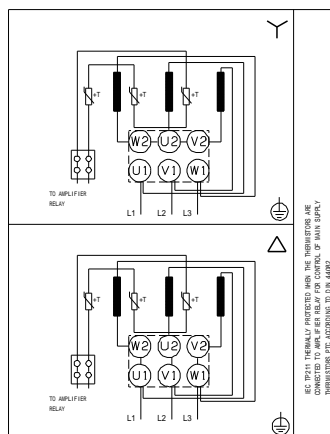
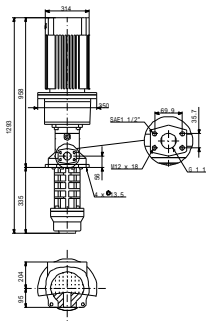
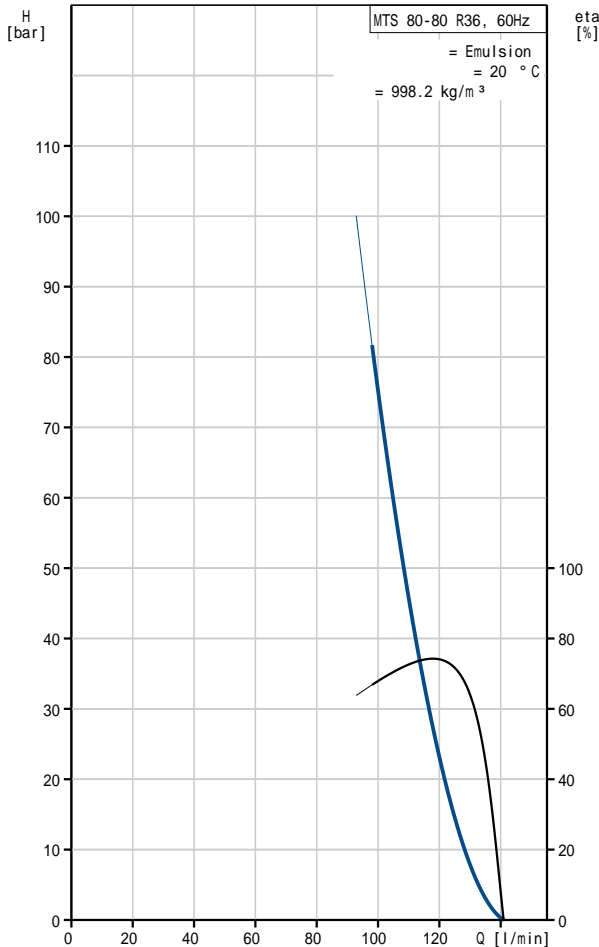
:

: 182 kg

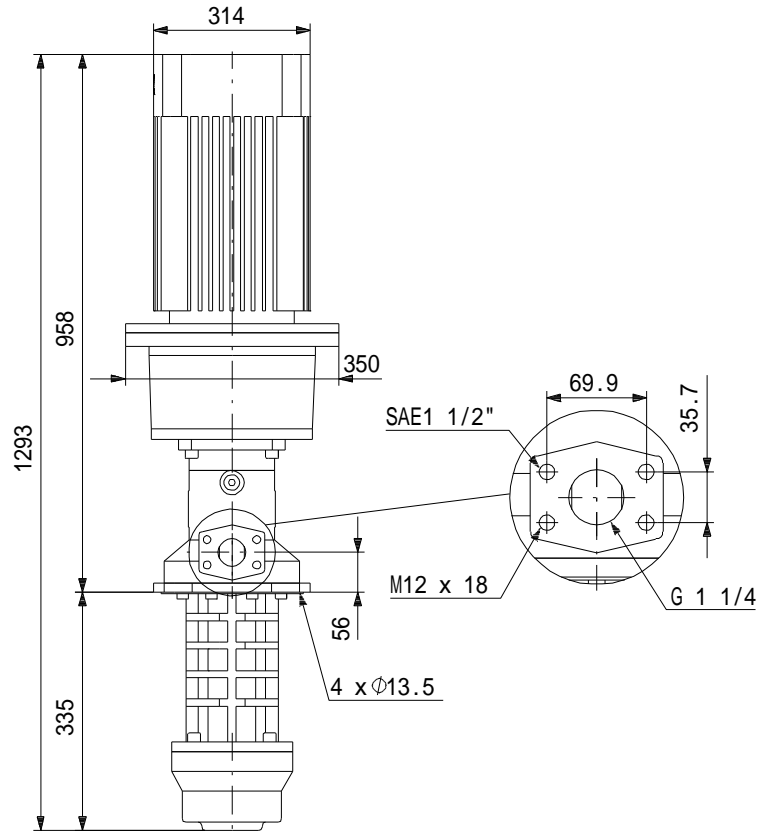
### MTS 80-80 R36 DQ 60 Hz



		MTS 80-80 R36 DQ
EAN		
	가	3500 rpm
		98.6 l/min
1		DQ
	가:	CE, EAC
		A
		60 °C
		80 bar
		G2"
		G 1 1/4" / SAE 1 1/2"
		335 mm
		FF300
		Emulsion
		80 °C
		20 °C
		998.2 kg/m <sup>3</sup>
		180MB
IE		NEMA Premium / IE3 60Hz
	- P2:	22 kW
	(P2):	19.6 kW
		60 Hz
		3 x 380-480D/660-690Y V
		40,0-32,5/23,0-22,2 A
		650-1040 %
cos phi -		0.91-0.91
		3520-3560 rpm
		IE3 91,7%
		91.7 %
3/4		93.7 %
1/2		94.4 %
		2
	(IEC 34-5):	55 Dust/Jetting
	(IEC 85):	F
		PTC
		87470021
Pos term		12 o'clock
		182 kg
		3 %
		36



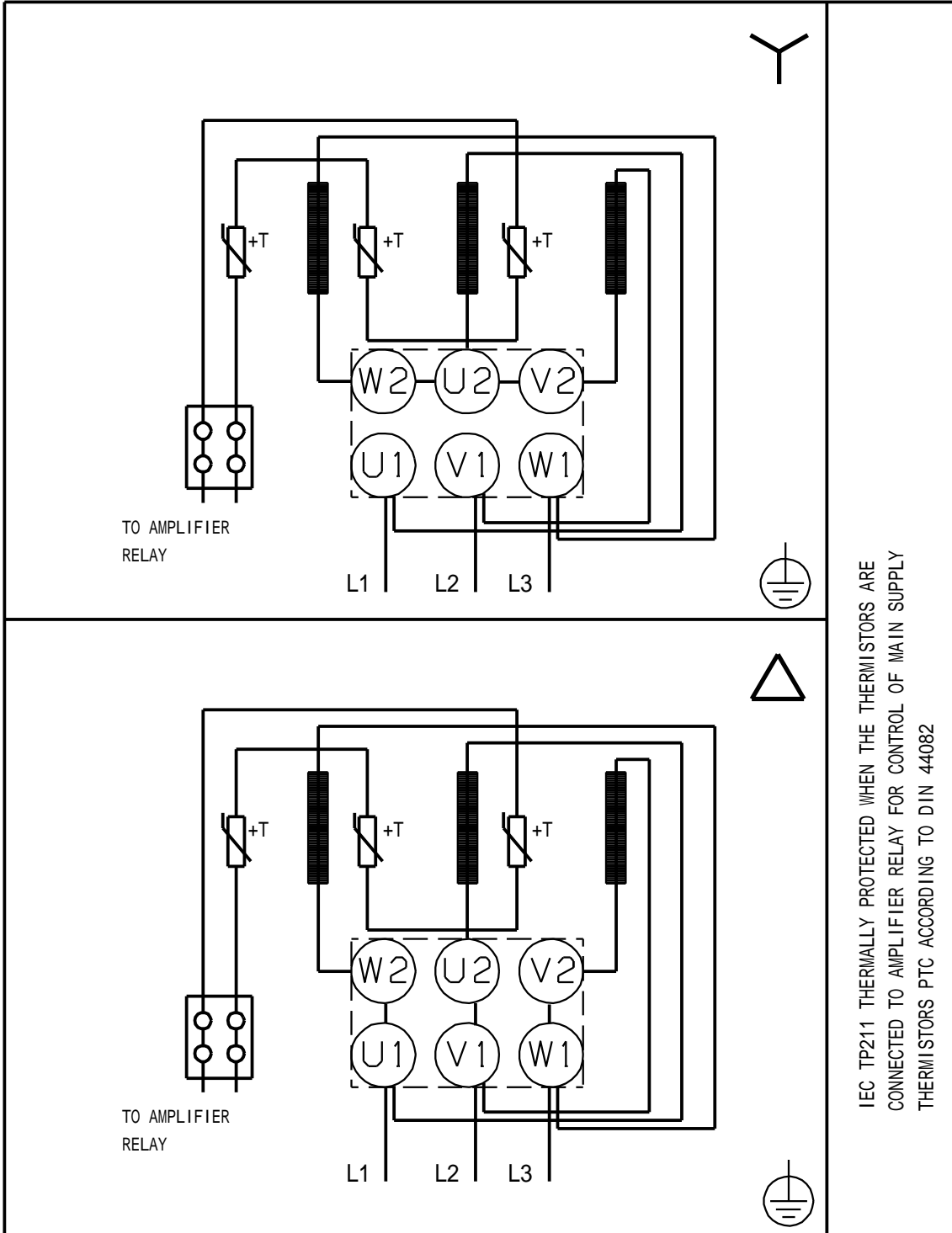
MTS 80-80 R36 DQ 60 Hz



!

[mm]

MTS 80-80 R36 DQ 60 Hz



IEC TP211 THERMALLY PROTECTED WHEN THE THERMISTORS ARE  
CONNECTED TO AMPLIFIER RELAY FOR CONTROL OF MAIN SUPPLY  
THERMISTORS PTC ACCORDING TO DIN 44082